

CATALOGUE

SOLAR ENERGY | 2023



COMPLETE ENERGY SOLUTIONS FOR A BETTER TOMORROW



V-TAC

Meaningful Innovation.



WELCOME TO V-TAC

V-TAC Lighting

V-TAC Digital

V-TAC Audio

V-TAC Solar

V-TAC Electrical

V-TAC Smart

V-TAC Energy

V-TAC was founded with the vision of providing energy-efficient LED lighting solutions worldwide.

While building a vast portfolio in LED lighting over the past years, we were also able to build expertise in innovation and expand our R&D team to offer a diversified catalogue with over 4500 products to our clients and partners all over the UK and Europe.

Utilizing our brand value and manufacturing technologies, we have been expanding our product categories beyond lighting, with one mission to improve the lives of humanity worldwide.

Now, we are moving towards promoting sustainable practices that will help citizens and businesses lower their carbon footprint, and become a global leader in providing energy efficient systems — including solar panels, inverters, battery packs, and power stations.



ESTABLISHED
2009 - 2023



PRESENCE IN
75 COUNTRIES



TURNOVER
\$150M

WHY CHOOSE V-TAC?

V-TAC
Meaningful Innovation.

RESIDENTIAL

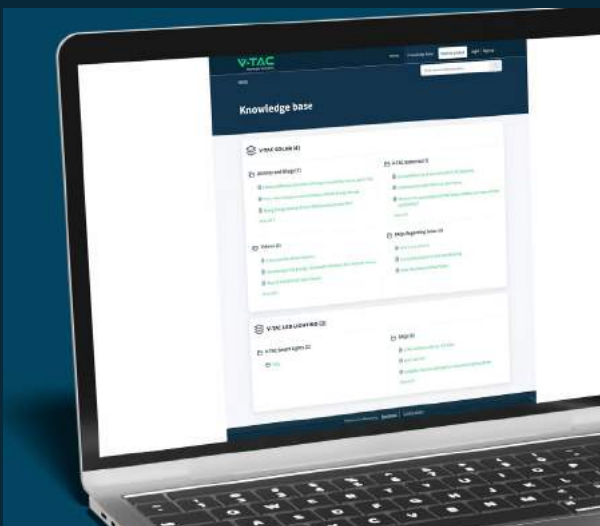


COMMERCIAL



Build your Full System with ONE BRAND!

TECHNICAL SUPPORT



V-TAC's Knowledge Base contains FAQs, product demo videos, electronic datasheet and manuals.

Please visit www.vtacenergy.com to access these resources.



If you need to get in touch with us, we are available through these channels:

Email: customercare@vtacenergy.com

Phone: 02072991212

Whatsapp Business: 02072991212

SOLAR PANELS

V-TAC
Meaningful Innovation.



HALF-CUT TECHNOLOGY

Unique circuit design to reduce temperature heat spots



SIGNIFICANTLY AVOIDING HEAT SPOT

The unique circuit design helps reduce the temperature heat spot of cells significantly to reduce the power loss and increase energy output of modules



LOWER COST

Increasing power generation can reduce the cost per kilowatt-hour

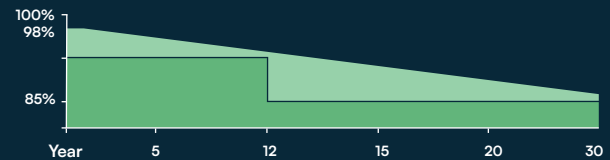


EXCELLENT PERFORMANCE OF PID RESISTANCE

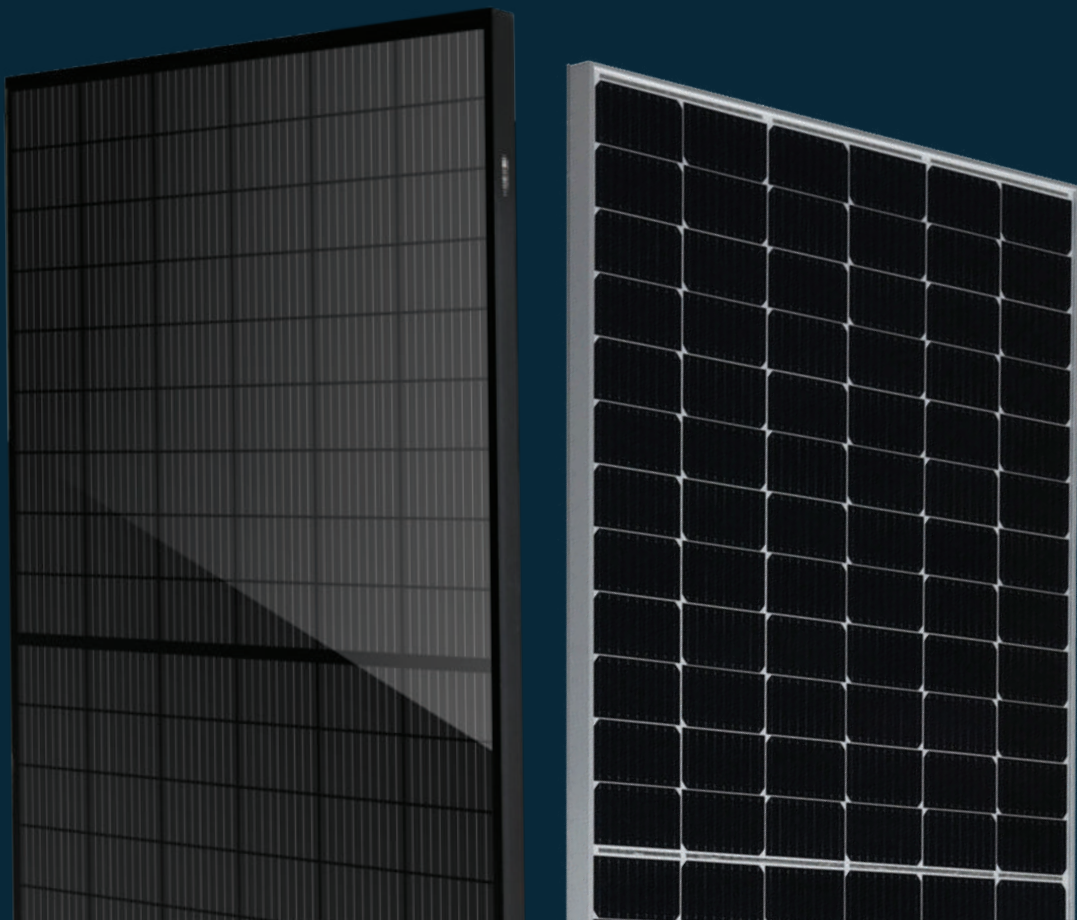
The performance of PID resistance (Potential Induced Degradation) passes all TUV NORD current testing criteria

12 YEAR
WARRANTY
PRODUCT MATERIAL

25 YEAR
WARRANTY
LINEAR POWER OUTPUT



- Maximum Cell Efficiency
- Maximum Positive Power Tolerance gives highest output per m2 of roof
- Aesthetically pleasing All Black Panel / Frame available
- Highest Heat Tolerance





410W HALF CUT MONO SOLAR PANEL ALL BLACK 35MM FRAME

Watts	SKU 31 pcs
410	11519



31 pcs - Regular Pallet



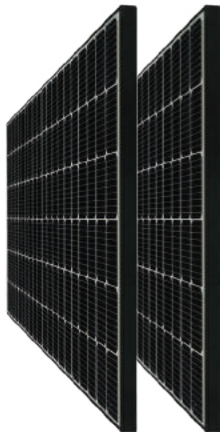
MECHANICAL CHARACTERISTICS

Cell Type	182*91 Mono
No. of Cells	108 (6*18)
Dimensions	D:1722*1134*35mm
Weight	21.50kg
Junction box	IP67/IP68 3diodes
Operating Temperature	-40~+85C

ELECTRICAL DATA (STC)

Peak Power(Pmax)	410.00
Maximum Power Voltage(Vmp)	31.46
Maximum Power Current(Imp)	13.04
Open Circuit Voltage(Voc)	37.45±3%
Short Circuit Current(Isc)	13.85±3%
Module Efficiency(%)	20.97

410 W HALF-CUT PANEL BLACK FRAME 35MM FRAME



Watts	SKU-12 pcs	SKU 15 pcs	SKU 31 pcs
410	11562	11563	11561



12/15 pcs - Wooden Pallet



31 pcs - Regular Pallet

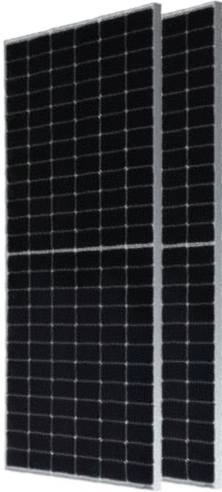


MECHANICAL CHARACTERISTICS

Cell Type	182*91 Mono
No. of Cells	108 (6*18)
Dimensions	D:1722*1134*35mm
Weight	21.50kg
Junction box	IP67/IP68 3diodes
Operating Temperature	-40~+85C

ELECTRICAL DATA (STC)

Peak Power(Pmax)	410.00
Maximum Power Voltage(Vmp)	31.46
Maximum Power Current(Imp)	13.04
Open Circuit Voltage(Voc)	37.45±3%
Short Circuit Current(Isc)	13.85±3%
Module Efficiency(%)	20.97



410W HALF-CUT MONO SOLAR PANEL SILVER 35MM FRAME

Watts	SKU-12 pcs	SKU 15 pcs	SKU 31 pcs
410	11550	11552	11518



12/15 pcs - Wooden Pallet



31 pcs - Regular Pallet

MECHANICAL CHARACTERISTICS

Cell Type	182*91 Mono
No. of Cells	108 (6*18)
Dimensions	D:1722*1134*35mm
Weight	21.50kg
Junction box	IP67/IP68 3diodes
Operating Temperature	-40~+85C

ELECTRICAL DATA (STC)

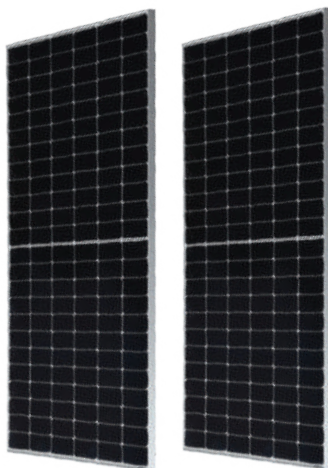
Peak Power(Pmax)	410.00
Maximum Power Voltage(Vmp)	31.46
Maximum Power Current(Imp)	13.04
Open Circuit Voltage(Voc)	37.45±3%
Short Circuit Current(Isc)	13.85±3%
Module Efficiency(%)	20.97



DOWNLOAD SPEC SHEET

1

METRE CABLE



410W HALF CUT MONO SOLAR PANEL SILVER FRAME SLIM 30MM

Watts	SKU-12 pcs	SKU 15 pcs	SKU 37 pcs
410	11549	11551	11517

SLIM
SIZE 30MM



12/15 pcs - Wooden Pallet



31 pcs - Regular Pallet

MECHANICAL CHARACTERISTICS

Cell Type	182*91 Mono
No. of Cells	108 (6*18)
Dimensions	D:1722*1134*30mm
Weight	21.50kg
Junction box	IP67/IP68 3diodes
Operating Temperature	-40~+85C

ELECTRICAL DATA (STC)

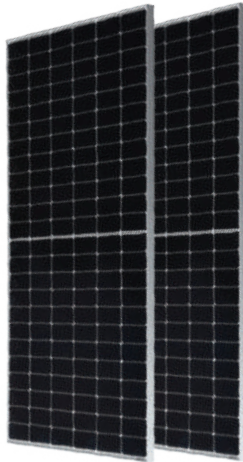
Peak Power(Pmax)	410.00
Maximum Power Voltage(Vmp)	31.46
Maximum Power Current(Imp)	13.04
Open Circuit Voltage(Voc)	37.45±3%
Short Circuit Current(Isc)	13.85±3%
Module Efficiency(%)	20.97



DOWNLOAD SPEC SHEET

1

METRE CABLE



450W HALF-CUT MONO SOLAR PANEL SILVER FRAME 35MM FRAME

Watts	SKU 11 pcs	SKU 14 pcs	SKU 31 pcs
450	11553	11554	11353



11/14 pcs - Wooden Pallet



31 pcs - Regular Pallet



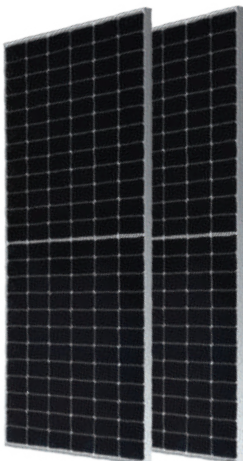
DOWNLOAD
SPEC SHEET

MECHANICAL CHARACTERISTICS

Cell Type	166*83 Mono
No. of Cells	144 (6*24)
Dimensions	2094*1038*35mm
Weight	23.50kg
Junction box	IP67/IP68 3diodes
Operating Temperature	-40~+85C

ELECTRICAL DATA (STC)

Peak Power(Pmax)	450.00
Maximum Power Voltage(Vmp)	41.50
Maximum Power Current(Imp)	10.85
Open Circuit Voltage(Voc)	49.30±3%
Short Circuit Current(Isc)	11.60±3%
Module Efficiency(%)	20.70



545W HALF-CUT MONO SOLAR PANEL SILVER FRAME 35MM FRAME

Watts	SKU 31 pcs
545	11354



31 pcs - Regular Pallet



DOWNLOAD
SPEC SHEET

MECHANICAL CHARACTERISTICS

Cell Type	182*91 Mono
No. of Cells	144 (6*24)
Dimensions	2279*1134*35mm
Weight	28.40kg
Junction box	IP67/IP68 3diodes
Operating Temperature	-40~+85C

ELECTRICAL DATA (STC)

Peak Power(Pmax)	545.00
Maximum Power Voltage(Vmp)	41.93
Maximum Power Current(Imp)	13.00
Open Circuit Voltage(Voc)	49.90±3%
Short Circuit Current(Isc)	13.92±3%
Module Efficiency(%)	21.08

SOLAR INVERTERS

V-TAC
Meaningful Innovation.



Solar Inverters are devices that convert the direct current (DC) generated by solar panels into alternating current (AC) which is used by domestic and commercial appliances. It is one of the most critical components of the solar power system as it converts power from the sun into useful energy and is often referred to as the brain of a solar system. Solar inverters are a crucial part of a solar system since power from the sun cannot be directly used to run electrical appliances. V-TAC's range of solar inverters have evolved to become much more smart and intelligent units, performing other functions such as data monitoring, advanced utility controls, energy management, and more.

**All inverters have the relevant G98, G99, G100 certificates and are type tested for use in the UK grid.
Max power input +25% of max power generation**





3.6KW ON GRID SOLAR INVERTER- WITH Wi-Fi DONGLE

PRODUCT DETAILS

Inputs:	PV Solar/AC Grid Power
Output Voltage:	220/230/240 Vac
Max Power Input:	5400W
Max V DC Input:	600V
Max Current Input:	1 x 14A
MPPTs:	2
Strings per MPPT:	1
MPPT Range:	70~550V
Communication Mode:	CAN/RS485 / WiFi / Wire Ethernet / GPRS (optional)

SIZE AND WEIGHT

Dimensions (W x H x D, mm)	358 x 360 x 142
Weight:	10kg
Protection Degree:	IP65
Ambient Temperature Range:	-25°C-+60°C
Noise Emission:	<28Db

ADDITIONAL INFORMATION:

- ⊗ Multi-core processor design and advanced MPPT Control
- ⊗ High reliability and response speed
- ⊗ Programmable export
- ⊗ Single-phase operation
- ⊗ AC couple- For Additional PV input 6 stages time of use settings

05 YEAR
WARRANTY



Power	SKU
3.6kW	11726

CERTIFICATIONS AND COMPLIANCE

IEC 60068, UL1741, EN62109
 EN/IEC 61000-6-2, EN/IEC 61000-6-3, EN61000-3-2, EN61000-3-3, EN61000-3-11, EN61000-3-12
 IEEE1547, CSA C22, EN50549, VDE4105, VDE0126, RD1699, ABNT NBR16149 & 16150, AS4777.2, NB/T32004, G98/G99, IEC61727
 Meets UK, European and International Safety Standards
 Meets UK, European and International EMI Standards



5KW ON GRID SOLAR INVERTER WITH Wi-Fi DONGLE

PRODUCT DETAILS

Inputs:	PV Solar/AC Grid Power
Output Voltage:	220/230 Vac
Max Power Input:	7000W
Max V DC Input:	600V
Max Current Input:	1 x 18.5A
MPPTs:	2
Strings per MPPT:	1
MPPT Range:	180V ~ 600V
Communication Mode:	CAN/LCD, LED, RS485, CAN, Wi-Fi, GPRS, 4G

SIZE AND WEIGHT

Dimensions (W x H x D, mm)	358 x 360 x 142
Weight:	10kg
Protection Degree:	IP65
Ambient Temperature Range:	-25°C-+60°C
Noise Emission:	<28Db

ADDITIONAL INFORMATION:

- ⊗ Multi-core processor design and advanced MPPT Control
- ⊗ High reliability and response speed
- ⊗ Programmable export
- ⊗ Single-phase operation
- ⊗ AC couple- For Additional PV input 6 stages time of use settings

05 YEAR
WARRANTY



DOWNLOAD
SPEC SHEET

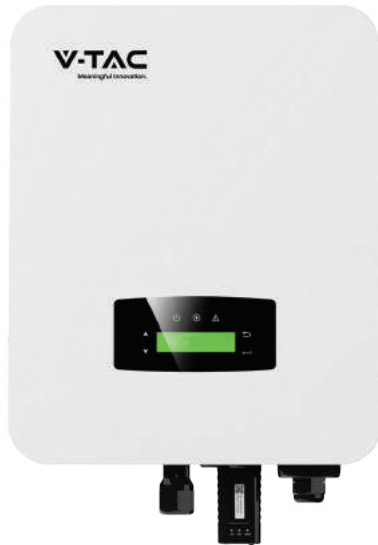
Power	SKU
5kW	11820

CERTIFICATIONS AND COMPLIANCE

EN/IEC 61000-6-2, EN/IEC 61000-6-3, EN61000-3-2, EN61000-3-3, EN61000-3-11, EN61000-3-12

IEC 60068, UL1741, EN62109

IEEE1547, CSA C22, EN50549, VDE4105, VDE0126, RD1699, ABNT NBR16149 & 16150, AS4777.2, NB/T32004, **G98/G99**, IEC61727



3.6kW SINGLE PHASE HYBRID INVERTER WITH Wi-Fi DONGLE
PRODUCT DETAILS

Inputs:	PV Solar/AC Grid Power
Output Voltage:	220/230 Vac
Max Power Input:	5400W
Max V DC Input:	550V
Max Current Input:	1 x 18.5
MPPTs:	2
Strings per MPPT:	1
MPPT Range:	80~500V
Communication Mode:	CAN/LCD, LED, RS485, CAN, Wi-Fi, GPRS, 4G

6kW SINGLE PHASE HYBRID INVERTER WITH Wi-Fi DONGLE
PRODUCT DETAILS

Inputs:	PV Solar/AC Grid Power
Output Voltage:	220/230 Vac
Max Power Input:	9000W
Max V DC Input:	550V
Max Current Input:	1 x 18.5A
MPPTs:	2
Strings per MPPT:	1
MPPT Range:	80V~500V
Communication Mode:	CAN/LCD, LED, RS485, CAN, Wi-Fi, GPRS, 4G

05 YEAR
WARRANTY



Power	SKU
3.6kW	11576



Power	SKU
6kW	11514

SIZE AND WEIGHT (SKU-11576 AND SKU-11514)

Dimensions (W x H x D, mm)	513 x 370 x 192
Weight:	17kg
Protection Degree:	IP65,NEMA4X
Ambient Temperature Range:	-25°C-+60°C
Noise Emission:	<25Db

CERTIFICATIONS AND COMPLIANCE

NRS97, **G98/G99**, EN50549-1, C10/C11, AS 4777,
VDE-AR-N4105,VDE0126, IEC62040, IEC62109-1, IEC62109-2
EN61000-6-2, EN61000-6-3
Meets UK, European and International Safety Standards G98
Meets UK, European and International EMI Standards

ADDITIONAL INFORMATION:

- ⊗ Multi-core processor design and advanced MPPT Control
- ⊗ High reliability and response speed
- ⊗ Programmable export
- ⊗ Single-phase operation
- ⊗ AC couple- For Additional PV input 6 stages time of use settings

5kW SINGLE PHASE HYBRID INVERTER IP65 Wi-Fi Dongle Included



PRODUCT DETAILS

Inputs:	PV Solar/AC Grid Power
Output Voltage:	220/230 Vac
Max Power Input:	7000W
Max V DC Input:	550V
Max Current Input:	1 x 14A
MPPTs:	2
Strings per MPPT:	1
MPPT Range:	125V~500V
Communication Mode:	RS485 / CAN / DRM Optional: WIFI / 4G

SIZE AND WEIGHT

Dimensions (W x H x D, mm)	550 x 515 x 200
Weight:	25kg
Protection Degree:	IP65
Ambient Temperature Range:	-25°C~+60°C
Noise Emission:	<35Db

05 YEAR
WARRANTY



Power	SKU
5kW	11509

ADDITIONAL INFORMATION:

- ⊗ Multi-core processor design and advanced MPPT Control
- ⊗ High reliability and response speed
- ⊗ Programmable export
- ⊗ Single-phase operation
- ⊗ AC couple- For Additional PV input 6 stages time of use se ngs

CERTIFICATIONS AND COMPLIANCE

NRS97, **G98/G99**, EN50549-1, C10/C11, AS 4777, VDE-AR-N4105, VDE0126, IEC62040, IEC62109-1, IEC62109-2
EN61000-6-2, EN61000-6-3

Meets UK, European and International Safety Standards

Meets UK, European and International EMI Standards



5kW ON GRID SOLAR INVERTER (XG SERIES)-THREE PHASE

PRODUCT DETAILS

Inputs:	PV Solar/AC Grid Power
Output Voltage:	230Vac / 400Vac, 3L / N / PE
Max Power Input:	8kw
Max V DC Input:	1100V
Max Current Input:	1x13A
MPPTs:	2
Strings per MPPT:	1
MPPT Range:	140~1000V
Communication Mode:	RS485 / WiFi /Usb/ Ethernet / GPRS

SIZE AND WEIGHT

Dimensions (W x H x D, mm)	430 x 380 x 130
Weight:	12kg
Protection Degree:	IP66
Ambient Temperature Range:	-25°C-+60°C
Noise Emission:	29dB

ADDITIONAL INFORMATION:

- ⊗ Multi MPP Trackers
- ⊗ 160% DC Input oversizing
- ⊗ Smart I-V curve diagnosis supported
- ⊗ Three-phase operation
- ⊗ AFCI function(optional)
- ⊗ Intelligent fault detection

10 YEAR
WARRANTY



Power	SKU
5kW	11381

CERTIFICATIONS AND COMPLIANCE

IEC 61727, IEC 62116, IEC 60068, IEC 61683, VDE-AR-N 4110:2018, VDE-AR-N 4105:2018, VDE-AR-N 4120:2018, EN 50549, AS/NZS 4777.2:2015, CEI 0-21, VDE 0126-1-1/A1 VFR 2014, UTE C15-712-1:2013, DEWA DRRG, NRS 097-2-1, MEA/PEA, C10/11, **C98/C99**

IEC 62109-1:2010, IEC 62109-2:2011, EN 61000-6-2:2005, EN 61000-6-3:2007/A1:2011

Meets UK, European and International EMI Standards



8kW ON GRID SOLAR INVERTER (XG SERIES)-THREE PHASE

PRODUCT DETAILS

Inputs:	PV Solar/AC Grid Power
Output Voltage:	230Vac / 400Vac, 3L / N / PE
Max Power Input:	12.8kW
Max V DC Input:	1100V
Max Current Input:	2x13A
MPPTs:	2
Strings per MPPT:	1
MPPT Range:	140~1000V
Communication Mode:	RS485 / WiFi / Usb/ Ethernet / GPRS

SIZE AND WEIGHT

Dimensions (W x H x D, mm)	430 x 380 x 150
Weight:	13.5kg
Protection Degree:	IP66
Ambient Temperature Range:	-25°C-+60°C
Noise Emission:	29dB

10 YEAR
WARRANTY



Power	SKU
8kW	11382

ADDITIONAL INFORMATION:

- ⊙ Multi MPP Trackers
- ⊙ 160% DC Input oversizing
- ⊙ Smart I-V curve diagnosis supported
- ⊙ Three-phase operation
- ⊙ AFCI function(optional)
- ⊙ Intelligent fault detection

CERTIFICATIONS AND COMPLIANCE

IEC 61727, IEC 62116, IEC 60068, IEC 61683, VDE-AR-N 4110:2018, VDE-AR-N 4105:2018, VDE-AR-N 4120:2018, EN 50549, AS/NZS 4777.2:2015, CEI 0-21, VDE 0126-1-1/A1 VFR 2014, UTE C15-712-1:2013, DEWA DRRG, NRS 097-2-1, MEA/PEA, C10/11, **C98/C99**

IEC 62109-1:2010, IEC 62109-2:2011, EN 61000-6-2:2005, EN 61000-6-3:2007/A1:2011

Meets UK, European and International EMI Standards



10kW ON GRID SOLAR INVERTER (XG SERIES)-THREE PHASE

PRODUCT DETAILS

Inputs:	PV Solar/AC Grid Power
Output Voltage:	230Vac / 400Vac, 3L / N / PE
Max Power Input:	16kW
Max V DC Input:	1100V
Max Current Input:	2x13A
MPPTs:	2
Strings per MPPT:	1
MPPT Range:	140~1000V
Communication Mode:	RS485 / WiFi /Usb/ Ethernet / GPRS

SIZE AND WEIGHT

Dimensions (W x H x D, mm)	430 x 380 x 150
Weight:	13.5kg
Protection Degree:	IP66
Ambient Temperature Range:	-25°C-+60°C
Noise Emission:	29dB

10 YEAR
WARRANTY



Power	SKU
10kW	11383

ADDITIONAL INFORMATION:

- ⊙ Multi MPP Trackers
- ⊙ 160% DC Input oversizing
- ⊙ Smart I-V curve diagnosis supported
- ⊙ Three-phase operation
- ⊙ AFCI function(optional)
- ⊙ Intelligent fault detection

CERTIFICATIONS AND COMPLIANCE

IEC 61727, IEC 62116, IEC 60068, IEC 61683, VDE-AR-N 4110:2018, VDE-AR-N 4105:2018, VDE-AR-N 4120:2018, EN 50549, AS/NZS 4777.2:2015, CEI 0-21, VDE 0126-1-1/A1 VFR 2014, UTE C15-712-1:2013, DEWA DRRG, NRS 097-2-1, MEA/PEA, C10/11, **C98/C99**

IEC 62109-1:2010, IEC 62109-2:2011, EN 61000-6-2:2005, EN 61000-6-3:2007/A1:2011

Meets UK, European and International EMI Standards



15kW ON GRID SOLAR INVERTER (XG SERIES)-THREE PHASE

PRODUCT DETAILS

Inputs:	PV Solar/AC Grid Power
Output Voltage:	230Vac / 400Vac, 3L / N / PE
Max Power Input:	24kW
Max V DC Input:	1100V
Max Current Input:	1x14A, 2x28A
MPPTs:	2
Strings per MPPT:	1
MPPT Range:	180~1000V
Communication Mode:	RS485 / WiFi / Usb/ Ethernet / GPRS

SIZE AND WEIGHT

Dimensions (W x H x D, mm)	481 x 395 x 195
Weight:	13.5kg
Protection Degree:	IP66
Ambient Temperature Range:	-30°C~+60°C
Noise Emission:	29dB

ADDITIONAL INFORMATION:

- ⊗ Multi MPP Trackers
- ⊗ 160% DC Input oversizing
- ⊗ Smart I-V curve diagnosis supported
- ⊗ Three-phase operation
- ⊗ AFCI function(optional)
- ⊗ Intelligent fault detection

10 YEAR
WARRANTY



Power	SKU
15kW	11630

CERTIFICATIONS AND COMPLIANCE

IEC 61727, IEC 62116, IEC 60068, IEC 61683, VDE-AR-N 4110:2018, VDE-AR-N 4105:2018, VDE-AR-N 4120:2018, EN 50549, AS/NZS 4777.2:2015, CEI 0-21, VDE 0126-1-1/A1 VFR 2014, UTE C15-712-1:2013, DEWA DRRG, NRS 097-2-1, MEA/PEA, C10/11, **C98/C99**

IEC 62109-1:2010, IEC 62109-2:2011, EN 61000-6-2:2005, EN 61000-6-3:2007/A1:2011

Meets UK, European and International EMI Standards

30kW ON GRID SOLAR INVERTER (XG SERIES)-THREE PHASE



PRODUCT DETAILS

Inputs:	PV Solar/AC Grid Power
Output Voltage:	230Vac / 400Vac, 3L / N / PE
Max Power Input:	48Kw
Max V DC Input:	1100V
Max Current Input:	2x26A
MPPTs:	3
Strings per MPPT:	2
MPPT Range:	200~1000V
Communication Mode:	RS485 / WiFi /Usb/ Ethernet / GPRS

SIZE AND WEIGHT

Dimensions (W x H x D, mm)	600 x 430 x 230
Weight:	32kg
Protection Degree:	IP66
Ambient Temperature Range:	-30°C-+60°C
Noise Emission:	35dB

ADDITIONAL INFORMATION:

- ⊗ Multi MPP Trackers
- ⊗ 160% DC Input oversizing
- ⊗ Smart I-V curve diagnosis supported
- ⊗ Three-phase operation
- ⊗ AFCI function(optional)
- ⊗ Intelligent fault detection

10 YEAR
WARRANTY



Power	SKU
30kW	11507

CERTIFICATIONS AND COMPLIANCE

IEC 61727, IEC 62116, IEC 60068, IEC 61683, VDE-AR-N 4110:2018, VDE-AR-N 4105:2018, VDE-AR-N 4120:2018, EN 50549, AS/NZS 4777.2:2015, CEI 0-21, VDE 0126-1-1/A1 VFR 2014, UTE C15-712-1:2013, DEWA DRRG, NRS 097-2-1, MEA/PEA, C10/11, **G98/G99**

IEC 62109-1:2010, IEC 62109-2:2011, EN 61000-6-2:2005, EN 61000-6-3:2007/A1:2011

Meets UK, European and International EMI Standards



50kW ON GRID SOLAR INVERTER (XG SERIES)-THREE PHASE

PRODUCT DETAILS

Inputs:	PV Solar/AC Grid Power
Output Voltage:	230Vac / 400Vac, 3L / N / PE
Max Power Input:	80kW
Max V DC Input:	1100V
Max Current Input:	2x39A, 2x26A
MPPTs:	4
Strings per MPPT:	3/2/3/2
MPPT Range:	200~1000V
Communication Mode:	RS485 / WiFi / Usb/ Ethernet / GPRS

SIZE AND WEIGHT

Dimensions (W x H x D, mm)	650 x 450 x 260
Weight:	50kg
Protection Degree:	IP66
Ambient Temperature Range:	-30°C-+60°C
Noise Emission:	35dB

10 YEAR
WARRANTY



Power	SKU
50kW	11521

ADDITIONAL INFORMATION:

- ⊗ Multi MPP Trackers
- ⊗ 160% DC Input oversizing
- ⊗ Smart I-V curve diagnosis supported
- ⊗ Three-phase operation
- ⊗ AFCI function(optional)
- ⊗ Intelligent fault detection

CERTIFICATIONS AND COMPLIANCE

IEC 61727, IEC 62116, IEC 60068, IEC 61683, VDE-AR-N 4110:2018, VDE-AR-N 4105:2018, VDE-AR-N 4120:2018, EN 50549, AS/NZS 4777.2:2015, CEI 0-21, VDE 0126-1-1/A1 VFR 2014, UTE C15-712-1:2013, DEWA DRRG, NRS 097-2-1, MEA/PEA, C10/11, **G98/G99**

IEC 62109-1:2010, IEC 62109-2:2011, EN 61000-6-2:2005, EN 61000-6-3:2007/A1:2011

Meets UK, European and International EMI Standards

100kW ON GRID SOLAR INVERTER (XG SERIES)-THREE PHASE



PRODUCT DETAILS

Inputs:	PV Solar/AC Grid Power
Output Voltage:	230Vac / 400Vac, 3L / N / PE, 3L/ PE
Max Power Input:	150kW
Max V DC Input:	1100V
Max Current Input:	2x26A
MPPTs:	9
Strings per MPPT:	2
MPPT Range:	180~1000V
Communication Mode:	RS485 / WiFi /Usb/ Ethernet / GPRS

SIZE AND WEIGHT

Dimensions (W x H x D, mm)	1050 x 660 x 330
Weight:	95kg
Protection Degree:	IP66
Ambient Temperature Range:	-30°C+60°C
Noise Emission:	29dB

10 YEAR
WARRANTY



Power	SKU
100kW	11520

ADDITIONAL INFORMATION:

- ⊗ Multi MPP Trackers
- ⊗ 160% DC Input oversizing
- ⊗ Smart I-V curve diagnosis supported
- ⊗ Three-phase operation
- ⊗ AFCI function(optional)
- ⊗ Intelligent fault detection

IEC 61727, IEC 62116, IEC 60068, IEC 61683, VDE-AR-N 4110:2018, VDE-AR-N 4105:2018, VDE-AR-N 4120:2018, EN 50549, AS/NZS 4777.2:2015, CEI 0-21, VDE 0126-1-1/A1 VFR 2014, UTE C15-712-1:2013, DEWA DRRG, NRS 097-2-1, MEA/PEA, C10/11, **G98/G99**

IEC 62109-1:2010, IEC 62109-2:2011, EN 61000-6-2:2005, EN 61000-6-3:2007/A1:2011

Meets UK, European and International EMI Standards

BATTERY STORAGE SOLUTIONS

V-TAC
Meaningful Innovation.



Having batteries in your solar power system gives you more energy self-sufficiency, and helps you achieve your ROI. We offer different types of safe, reliable battery solutions to meet power storage needs depending on a variety of factors – the solar array size, backup power requirements, and overnight energy consumption in kWh.





05 YEAR
WARRANTY



Power	SKU
5.12kW	11448

5.12kWh WALL MOUNTED LiFePO4 BATTERY STORAGE 48V

Storage Capacity:	5120Wh
Standard Capacity	100Ah/51.2V
Continuous Input Current:	50A
Continuous Output Current:	50A
Standard Charging Voltage:	57.6V-60V
Cut OFF:	36V-48V
Depth of Discharge:	>80%
Communication Mode:	CAN/RS485
Cycle Life:	>5000 times (<0.5C)
Ingress Protection :	IP20
Dimensions (W x H x D, mm)	607 x 720 x 270mm
Weight:	50.67kg
Installation:	Wall-mounted/Floor-Mounted
Operating Temperature Range:	-20°C-70°C

IEC 62619
Meets UK, European and International Safety Standards
Meets UK, European and International EMI Standards



05 YEAR
WARRANTY



Power	SKU
10.24kW	11447

10.24kWh WALL MOUNTED LiFePO4 BATTERY STORAGE 48V

Storage Capacity:	10240W/h
Standard Capacity	200Ah/51.2V
Continuous Input Current:	100A
Continuous Output Current:	100A
Standard Charging Voltage:	57.6V-60V
Cut OFF:	36V-48V
Depth of Discharge:	>80%
Communication Mode:	CAN/RS485
Cycle Life:	>5000 times (<0.5C)
Ingress Protection :	IP20
Dimensions (W x H x D, mm)	660 x 855 x 360mm
Weight:	89.91kg
Installation:	Wall-mounted/Floor-Mounted
Operating Temperature Range:	-20°C-70°C

IEC 62619
Meets UK, European and International Safety Standards
Meets UK, European and International EMI Standards



7.68kWh WALL MOUNTED LiFePO4 BATTERY STORAGE 48V

Storage Capacity:	7640W/h
Standard Capacity	100Ah/48V
Continuous Input Current:	100A
Continuous Output Current:	100A
Standard Charging Voltage:	48V
Cut OFF:	42V
Depth of Discharge:	>80%
Communication Mode:	CAN/RS-485
Cycle Life:	> 6000, 80%DOD@25 °
Ingress Protection :	IP20
Dimensions (W x H x D, mm)	830 x 600 x 111.5
Weight:	80kg
Installation:	Wall-mounted/Floor-Mounted
Operating Temperature Range:	Charge: 0~55°C Discharge: -20~60°C

05 YEAR WARRANTY

SUPER SLIM DESIGN



DOWNLOAD SPEC SHEET

Power	SKU
7.68kW	11548

IEC 62619
Meets UK, European and International Safety Standards
Meets UK, European and International EMI Standards





LiFePO4
CATHODE MATERIAL

05 YEAR
WARRANTY



Power	SKU
5.12kW	11377

5.12kWh RACK MOUNTED LiFePO4 BATTERY STORAGE 51.2V

Storage Capacity:	5120w/H
Standard Capacity	100Ah@0.2C, 25°C
Continuous Input Current:	100A@25 °C
Continuous Output Current:	100A@25 °C
Standard Charging Voltage:	56.8V
Cut OFF:	42V
Depth of Discharge:	80%
Communication Mode:	CAN2.0, RS485
Cycle Life:	≥6000(25°C±2°C,0.5C/0.5C,70%EOL)
Ingress Protection :	IP20
Dimensions (W x H x D, mm)	445 x 400 x 130 mm
Weight:	41kg
Installation:	Rack Mounted
Operating Temperature Range:	Charge : 0~+60°C Discharge : -20~+60°C

UN38.3, IEC62619, CE, CEI 0-21
Meets UK, European and International Safety Standards
Meets UK, European and International EMI Standards



LiFePO4
CATHODE MATERIAL

05 YEAR
WARRANTY



Power	SKU
9.60kW	11523

9.60kWh RACK MOUNTED LiFePO4 BATTERY STORAGE 48V

Storage Capacity:	9600w/H
Standard Capacity	200Ah@0.2C, 25°C
Continuous Input Current:	100A@25 °C
Continuous Output Current:	100A@25 °C
Standard Charging Voltage:	54V
Cut OFF:	40.5V
Depth of Discharge:	80%
Communication Mode:	CAN2.0, RS485
Cycle Life:	≥6000(25°C±2°C,0.5C/0.5C,70%EOL)
Ingress Protection :	IP20
Dimensions (W x H x D, mm)	445 x 500 x 244 mm
Weight:	81kg
Installation:	Rack Mounted
Operating Temperature Range:	Charge : 0~+60°C Discharge : -20~+60°C

UN38.3, IEC62619, CE, CEI 0-21
Meets UK, European and International Safety Standards
Meets UK, European and International EMI Standards



5.12kWh Wall/Floor MOUNTED LiFePO4 BATTERY STORAGE 51.2V

Storage Capacity:	5120W/h
Standard Capacity	100AH/51.2V
Continuous Input Current:	100A
Continuous Output Current:	100A
Standard Charging Voltage:	56.4Vdc
Cut OFF:	42V-58V
Depth of Discharge:	>80%
Communication Mode:	CAN/RS-485
Cycle Life:	> 6000, 80%DOD@25 °C
Ingress Protection :	IP65
Dimensions (W x H x D, mm)	410 x 666 x 179.5
Weight:	54.0kg
Installation:	Wall-mounted/Floor-Mounted
Operating Temperature Range:	0°C-55°C

IEC 62619
Meets UK, European and International Safety Standards
Meets UK, European and International EMI Standards

05 YEAR WARRANTY



DOWNLOAD SPEC SHEET

Power	SKU
5.12kW	11524



14.33kWh Wall/Floor MOUNTED LiFePO4 BATTERY STORAGE 51.2V

Storage Capacity:	14330 W/h
Standard Capacity	200Ah/51.2V
Continuous Input Current:	200A
Continuous Output Current:	200A
Standard Charging Voltage:	56.4Vdc
Cut OFF:	43.2Vdc
Depth of Discharge:	>80%
Communication Mode:	CAN/RS-485
Cycle Life:	> 6000, 80%DOD@25 °C
Ingress Protection :	IP65
Dimensions (W x H x D, mm)	500 x 800 x 250
Weight:	128.5kg
Installation:	Wall-mounted/Floor-Mounted
Operating Temperature Range:	-20°C-60°C

IEC 62619
Meets UK, European and International Safety Standards
Meets UK, European and International EMI Standards

05 YEAR WARRANTY



DOWNLOAD SPEC SHEET

Power	SKU
14.33kW	11525





3.3m Aluminium Mounting Rail Black

SKU-11748
561pcs/pallet



3.3m Aluminium Mounting Rail Anodised Silver

SKU-11792
561pcs/pallet



Aluminium Rail Splice with 2pcs Fixing Bolt Black

SKU-11749
200pcs/carton



Aluminium Rail Splice with 2pcs Fixing Bolt Anodised Silver

SKU-11794
200pcs/carton



30mm Aluminium Mid Clamp Silver

SKU-11752
400pcs/carton



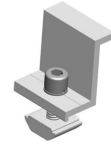
30-46mm Aluminium Universal Clamp Black

SKU-11750- Black
320pcs/carton



30-46mm Aluminium Universal Clamp Silver

SKU-11793 -Silver
320pcs/carton



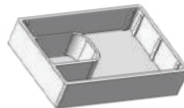
30mm Aluminium End Clamp Silver

SKU-11787
400pcs/carton



Rail End Cap Black

SKU-11786
600pcs/carton



Rail End Cap Silver

SKU-11795
600pcs/carton



L Foot Aluminium with 1 Rubber Pad

SKU-11747
200pcs/carton



Flat Plain Tile Roof Hook

SKU-11744 - Portrait
SKU-11789 - Landscape
60pcs/carton



Adjustable Tile Roof Hook

SKU-11746- Portrait
SKU-11791 - Landscape
40pcs/carton



Slate Tile Roof Hook

SKU-11745- Portrait
SKU-11790 - Landscape
80pcs/carton



Triangle Bracket (for flat roof)

SKU-11796
10pcs/carton



SET 1

SKU: 10347
BLACK MESH PVC COATED GALVANISED
IRON WIRE WITH NYLON HOOK AND SS TIES



SKU: 10337
BLACK MESH PVC COATED GALVANISED
IRON WIRE
12.7MM*12.7MM
30M



SKU: 10339
NYLON J HOOK
110MM
60 PCS



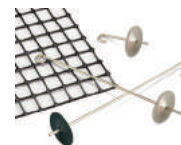
SKU: 10340
STAINLESS STEEL CABLE TIE
20 PCS

SET 2

SKU: 10369
BLACK MESH PVC COATED GALVANISED
IRON WIRE WITH SS HOOK AND SS TIES



SKU: 10337
BLACK MESH PVC COATED GALVANISED
IRON WIRE
12.7MM*12.7MM
30M



SKU: 10338
STAINLESS STEEL J HOOK
2.0MM*120MM
60 PCS



SKU: 10340
STAINLESS STEEL CABLE TIE
20 PCS

Compatible with all V-TAC Solar Systems

STORAGE BATTERY RACK
MAX 5 LAYERS
SKU 11556
Size: 558*500*160mm
Adapting Battery-VT48100E-P2



STORAGE BATTERY RACK
MAX 3 LAYERS
SKU 11557
Size: 598*589*260mm
Adapting Battery-VT48200B

PV CABLE 100M
4 SQUARE - SKU: 11414 BLACK
4 SQUARE - SKU: 11418 RED
6 SQUARE - SKU: 11415 BLACK
6 SQUARE - SKU: 11419 RED



PV6 CABLE WITH MC4 CONNECTORS 2 END FOR SOLAR PANEL CONNECTION
1 METRE SKU: 11570
2.5 V S SKU: 11416



GROUNDING PLATE
SKU 11395
8pcs pack



PV CABLE CONNECTOR-MC4
SKU: 11413



SINGLE PHASE SMART METRE

SKU: 11545



Nominal voltage	220V, 230, 240V
Current	5(80) A
Reference frequency	50Hz or 60Hz
Accuracy	Class 1.0
Operating range	0.85Un ~ 1.15Un
Power consumption	Voltage loop: $\leq 1W/5VA$; Current loop: $\leq 2VA$

THREE PHASE SMART METRE

SKU: 11546



Nominal voltage	3x220~240/380~415V; 3x120~138/208~240V
Current	Direct access: 5(80)A; Mutual access: 1.5(6)A
Reference frequency	50Hz or 60Hz
Accuracy	Class 1.0 for 5(80)A; Class 0.5 for 1.5(6)A
Operating range	0.85Un ~ 1.15Un
Power consumption	$\leq 1W/8VA$

PORTABLE POWER STATION

V-TAC
Meaningful Innovation.



Intelligent monitoring

Real-time monitoring of product performance.



Battery balance system

Extend the service life of batteries and ensure the consistency of batteries.



Short-circuit protection

Auto-cut circuit when short occurs.



Temperature protection

Guarantee battery working at safe temperature.



Overcharge protection

Prevent battery from overcharging and auto-stop when fully charged.



Over-current protection

Auto-cut circuit when overcurrent occurs.



Overpower protection

Product has dynamic power protection which will auto-stop output when overpower occurs.



Over-voltage protection

Protect product from high or low voltage harm to ensure product and facilities safe.

Bring the power right where you need it. Our portable power stations aim to help you power basic necessities wherever you are – whether it be in mobile homes, camp sites, and more. Each unit features intelligent energy monitoring, short circuit protection, overcharge & overpower protection, anti-overheating, and voltage protection. Made with high quality, long-life lithium batteries that are consistent and reliable.



PORTABLE POWER STATION

V-TAC
Meaningful Innovation.



300W PORTABLE POWER STATION



Can either be mains charged from home or on the go with V-TAC Folding Panel Range

**15W
Wireless
charger**



Model:	VT-303N	Qty:	1pc/box
SKU Code:	11740	Net Weight :	4.3 kgs
EAN Code:	3800170203266	Product Size :	W*H*L 249*171.5*208mm

- ⊙ Upgrade to LiFePO4 battery capacity 288Wh, 10 outlets
- ⊙ 1 x DC head 7909 input charging port: adapter charging (24V/2.5A), car charging (12V), solar charging (12-24V 120W MAX)
- ⊙ 2 x DC head 5521 output port and 1 x automobile auxiliary power outlet(total 12V/8A)
- ⊙ Speed charger QC 3.0 Output x 2, TYPE-C : Output PD18W X1, TYPE-C : Output PD65W
- ⊙ 1 x EU / BS standard AC ports
- ⊙ LED Flashlight with SOS
- ⊙ Quiet noise level during operation
- ⊙ Over-current, Over-voltage , over-temperature and Short Circuit Protections 9, Cycle life: 2000 Cycles



600W PORTABLE POWER STATION



Can either be mains charged from home or on the go with V-TAC Folding Panel Range

**15W
Wireless
charger**



Model:	VT-606N	Qty:	1pc/box
SKU Code:	11741	Net Weight :	7.8 kgs
EAN Code:	3800170203273	Product Size :	W*H*L 295*206*228.5mm

- ⊙ Upgrade to LiFePO4 battery capacity 576Wh, 10 outlets
- ⊙ 1 x DC head 7909 input charging port: adapter charging (24V/4.2A), car charging (12V), solar charging (12-24V 120W MAX)
- ⊙ 2 x DC head 5521 output port and 1 x automobile auxiliary power outlet(total 12V/8A)
- ⊙ Speed charger QC 3.0 Output USB-A , TYPE-C : Output PD18W X1, TYPE-C : Output PD65W
- ⊙ 2 x EU /BS standard AC ports, 600W AC Power Output
- ⊙ LED Flashlight with SOS
- ⊙ Quiet noise level during operation
- ⊙ Over-current, Over-voltage , over-temperature and Short Circuit Protections 9, Cycle life: 2000 Cycles



PORTABLE POWER STATION



1000W PORTABLE POWER STATION

Model:	VT-1001N	Qty:	1pc/box
SKU Code:	11742	Net Weight :	16.5kgs
EAN Code:	3800170203280	Product Size :	W*H*L 420*240*266mm

**15W
Wireless
charger**



- ⊙ Upgrade to LiFePO4 battery capacity 1024Wh, 12 outlets
- ⊙ AC230V fast charging, wide range solar charging voltage (12-100V 400W MAX)
- ⊙ 2 x DC head 5521 output port and 1 x automobile auxiliary power outlet(total 12V/8A)
- ⊙ Speed charger QC 3.0 Output x 2, TYPE-C : Output PD100W X2
- ⊙ 3 x EU /BS standard AC ports, 1200W AC 230V Power Output
- ⊙ LED Flashlight with SOS
- ⊙ Quiet noise level during operation
- ⊙ Over-current, Over-voltage , over-temperature and Short Circuit Protections 9, Cycle life: 2000 Cycles



DOWNLOAD
SPEC SHEET

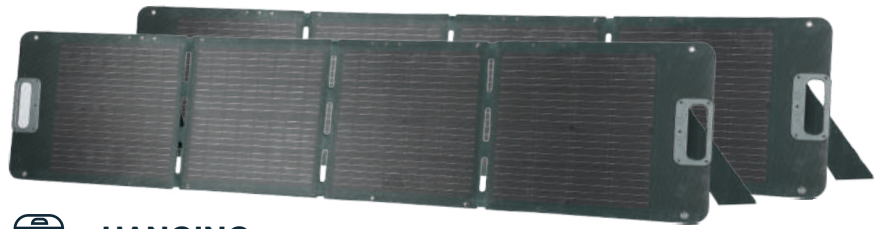


FOLDING SOLAR PANELS

V-TAC
Meaningful Innovation.

Folding Solar Panels

02 YEAR WARRANTY



KICKSTANDS
MAKE THE PANEL MORE EFFICIENT AT ABSORBING ENERGY



HANGING
SUITABLE FOR HANGING ANYWHERE AND RELEASING SPACE

80W

Model No: **VT-10080**
SKU Code: **11564**
EAN Code: **3800157699020**
Qty Per Pallet: **500 pcs**
Gross Weight: **5.2KG±0.3Kg**

Battery type	Monocrystalline solar cells
Folding method	1*4 fold
Folded size	366*356*54mm±5mm
Expanded Size	1670*356*25mm±5mm
Weight (NW)	4.3KG±0.5KG
Standard working Voltage	17.6V
Standard Working Current	4.54A



DOWNLOAD SPEC SHEET

120W

Model No: **VT-10120**
SKU Code: **11446**
EAN Code: **3800157692267**
Qty Per Pallet: **500 pcs**
Gross Weight: **6.3KG±0.5KG**

Battery type	Monocrystalline solar cells
Folding method	1*4 fold
Folded size	430*540*54mm±5mm
Expanded Size	1930*430*25mm±5mm
Weight (NW)	4.0Kg±0.3Kg
Standard working Voltage	17.6V
Standard Working Current	6.36A



DOWNLOAD SPEC SHEET

120x2W

Model No: **VT-10241**
SKU Code: **11565**
EAN Code: **3800157699037**
Qty Per Pallet: **500 pcs**
Gross Weight: **12.8KG±0.5KG**

Battery type	Monocrystalline solar cells
Folding method	1*4 fold x 2pieces
Folded size	430*540*54mm±5mm
Expanded Size	1930*430*25mm±5mm
Weight (NW)	4.0Kg±0.3Kg
Standard working Voltage	17.6V
Standard Working Current	12.72



DOWNLOAD SPEC SHEET

160W

Model No: **VT-10160**
SKU Code: **11566**
EAN Code: **3800157699044**
Qty Per Pallet: **200 pcs**
Gross Weight: **9KG±0.5KG**

Battery type	Monocrystalline solar cells
Folding method	1*4 fold
Folded size	680*468*54mm±5mm
Expanded Size	1670*680*25mm±5mm
Weight (NW)	6KG±0.5KG
Standard working Voltage	17.6V
Standard Working Current	9.08A



DOWNLOAD SPEC SHEET



Flexible Solar Panels

100W

Model No: **VT-10100**
 SKU Code: **11568**
 Power: **100W**
 Size : **980*586*2.7mm**
 Working voltage: **17V**
 Working current: **5.88A**

• **Flexible and easily installed**

Temporary use on boats, camper vans, caravans and mobile homes plus many more applications.

• **Built to Last**

Designed to withstand scratches and poor weather, the ultra-durable solar panels are ideal for the outdoors and come in handy during power outages.

210W

Model No: **VT-10210**
 SKU Code: **11569**
 Power: **210W**
 Size : **1035*1035*2.7mm**
 Working voltage: **20.5V,**
 Working current: **10.24A,**



Portable power supply 2in1
SKU 11573

03 YEAR
WARRANTY



Sofia Office

V-TAC Europe Ltd
41, bul. Rozhen
1271 Sofia
Bulgaria
www.v-tac.eu
office@v-tac.eu

UK Office

V-TAC House, Kelpatrick Road,
Slough, Berkshire, SL1 6BW, UK.
www.v-tac.co.uk
info@v-tac.co.uk

Hungary Office

Népfürdő utca 13. | H-1138
Budapest, Ungarn

Romania Office

Bulevardul Unirii, numărul 33
(vis-a-vis de Institutul Bancar Român),
București

Poland Office

V-TAC POLAND sp. z o.o.
Ul. Obornicka 330
60-689 Poznań

Middle East Office

Unit# 407/8/9 Jumeirah Bay Towers,
Plot# X3, JLT, P.O. Box 45244, Dubai

V-TAC West Europe

Ground Floor, 71 Lower Baggot
Street, Dublin O2, Ireland
D02 P593

V-TAC

Meaningful Innovation.

COMPLETE ENERGY SOLUTIONS FOR A BETTER TOMORROW